

HH-520 4 Channel Thermocouple Data Logger

Accepts Thermocouple Types K, J, T, E

Easy to use, high accuracy, hand-held thermocouple data logger with four input channels. Powered by batteries or USB.

Simply connect your thermocouple sensor(s) using a miniature flat-pinned plug. Selectable between thermocouple inputs K, J, T and E.

All four input channels are shown on the screen at once, identified as T1, T2, T3 and T4, with the ability to also show T1-T2 differential.

The data logger can store/recall up to 100 manual data logging 'spot' readings, or over 16,000 readings per channel in automatic logging mode. An alarm on channel 1 (T1) can be configured to audibly alert if the temperature exceeds a high or low limit.

Install the free Windows software on a PC and connect to the data logger using the supplied USB cable. The software can retrieve historical logged data or perform real-time logging on-screen; data can be printed, graphed and exported in .csv, .txt or .ghf format (.ghf format for use only with the software). Exported files can be loaded into the software or other applications such as Microsoft® Excel.

- 4 thermocouple input channels (accepts types K, J, T, E)
- 16,000 points per channel
- 100 sets of manually saved data
- High accuracy, fast response
- Selectable sampling rate
- T1, T2, T3, T4 and T1-T2
- °C / °F selectable
- Backlit LCD display
- Integrated tilt stand
- Min, Max, Avg, Hold, Mem, Recall, Offset, Setup, Temp. Unit, Alarm
- Battery or USB powered
- Auto power off / low battery indicator
- Free Windows software for real-time logging or historical data retrieval
- Supplied with carry case, instruction manual, batteries, software and micro USB cable

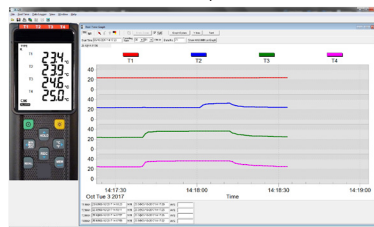
Technical Details	
Input (miniature plug) *	4 x Thermocouple
Measurement Range	K -200°C to +1372°C (-328°F to +2501°F)
	J -200°C to +1000°C (-328°F to +1832°F)
	T -200°C to +400°C (-328°F to +752°F)
	E -200°C to +750°C (-328°F to +1382°F)
Accuracy **	±(0.1% of rdg +0.7°C) ±(0.1% of rdg +1.4°F)
	Below -100°C (-148°F): ±(0.4% of rdg +0.7°C) ±(0.4% of rdg +1.4°F)
Resolution	0.1°C < 600°C / 0.1°F < 1000°F, 1°C ≥ 600°C / 1°F ≥ 1000°F
	0.01% of rdg +0.05°C (0.0028°F) per °C [< 18°C (64°F) or > 28°C (82°F)]
Temperature Coefficient	
Manual Logging Capacity	100 readings
Auto Logging Capacity	16,000 readings per channel
Sample Rate	2 times/sec default (00:01-60:59 programmable)
Display	Backlit LCD display
Functions	Min, Max, Avg, Hold, Mem, Recall, Offset, Setup, Temp. Unit, Alarm (T1), Auto Off, Low Battery
Operating Temperature	0°C to +50°C (+32°F to +122°F)
Operating Humidity	10 to 90 %RH (no condensing)
Storage Temperature	-20°C to +60°C (-4°F to +140°F)
Storage Humidity	10 to 75 %RH
Power	4 x 1.5V AAA batteries or via USB
Battery Life (alkaline)	Approximately 100 hours
Dimensions	187mm (L) x 75mm (W) x 29mm (H)
Weight	~308g with batteries, ~263g without batteries

* Thermocouple sensor(s) not supplied - available separately

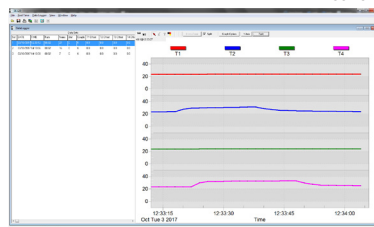
** Accuracy stated is for indicator only. The thermocouple sensor inaccuracy should also be considered



Top view



Free software for historical data and real-time logging



order code

HH-520

Please visit our website for latest software functionality and compatibility information



sales@thermosense.co.uk



thermosense.co.uk



01628 531166